



Rural outlook with easy Golf Club and Murray River access

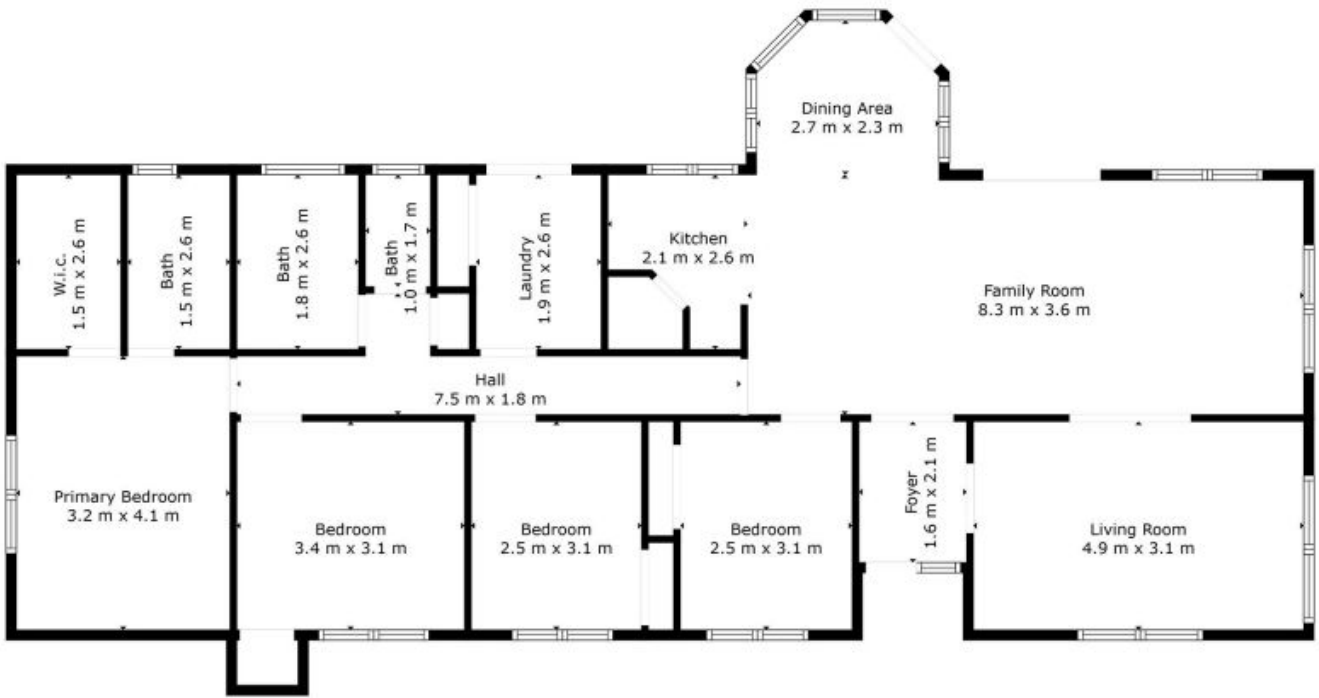
Positioned on a generous half acre allotment, this impressive four bedroom brick residence enjoys a rural outlook all while being only a 5 minute drive from Corowa's main street.

The property boasts a well-designed layout, extensive garden areas, and abundant outdoor space. Landscaped and low-maintenance, the front garden welcomes you into the home, featuring four generously sized bedrooms including a master with private ensuite and walk-in robe.

There is a vast open-plan living, kitchen and meals area, ideal for both everyday living and entertaining. Complemented by a second lounge, there is plenty of space for relaxation and family gatherings. This whole area is lig

Luke Moloney

0447 780 999



TOTAL: 133 m2
 FLOOR 1: 133 m2

Floor Plan Created By Cubicasa App. Measurements Deemed Highly Reliable But Not Guaranteed.

Moloney
 REAL ESTATE

92-94 Church Street

Corowa, NSW

Moloney
 REAL ESTATE