

1/55 Victoria Street Wahgunyah, VIC



2



1



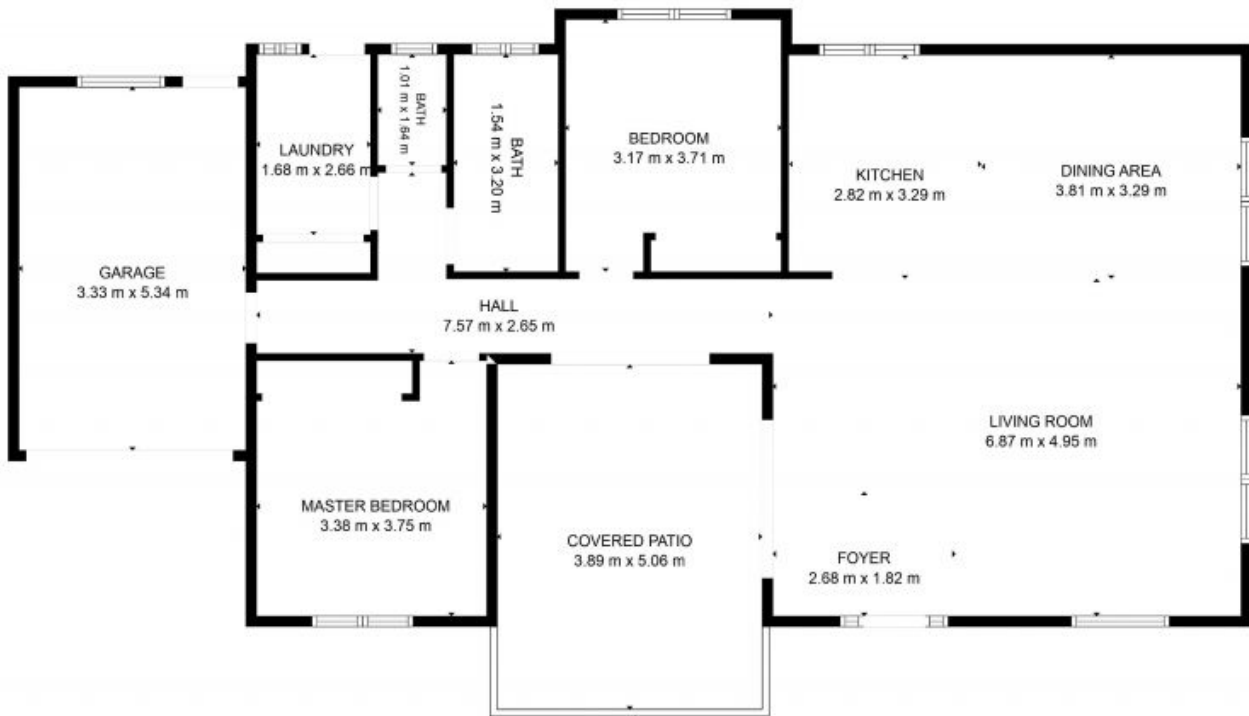
1



## The perfect downsizer without compromise

If you're looking for an immaculately maintained and secure unit but don't want to compromise on space, then look no further. Located only 5 minutes from Corowa and 10 minutes from Rutherglen, this beautifully presented property is the perfect place for those looking to downsize.

**Moloney Real Estate**



**TOTAL: 105 m<sup>2</sup>**  
 FLOOR 1: 105 m<sup>2</sup>  
 EXCLUDED AREAS: GARAGE: 18 m<sup>2</sup>, COVERED PATIO: 20 m<sup>2</sup>

SIZES AND DIMENSIONS ARE APPROXIMATE, ACTUAL MAY VARY.

**Moloney**  
 REAL ESTATE

1/55 Victoria Street

Wahgunyah, VIC

**Moloney**  
 REAL ESTATE